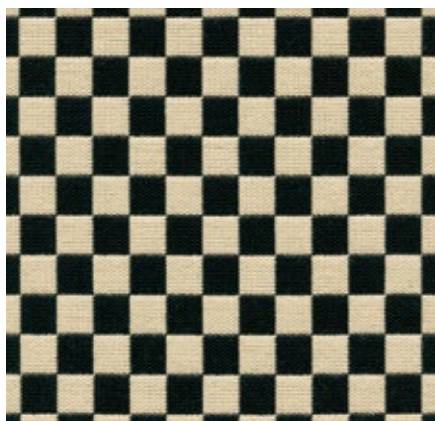


Checker

Home, F200



Alexander Girard developed the textile pattern 'Checker' in 1965 as part of his legendary redesign of the corporate image for Braniff International Airlines. The checkerboard design is a prime illustration of Girard's radical break from the conventional low-key aesthetic that characterised the sector at that time. The soft double weave fabric, with a high percentage of cotton, demonstrates exceptional purity of colour and its geometric pattern lends a striking note to any environment.

Material	77% cotton, 23% polyester
Weight	467 g/m ² (13.8 oz/y ²)
Abrasion resistance	20,000 Martindale
Fastness to light	Type 6
Pilling	Grade 4-5
Fastness to rubbing	Grade 4-5 dry and wet

Eames Plastic Chairs
Wire Chair

Checker



01
black/white