

vitra.

Oson Citterio Collection





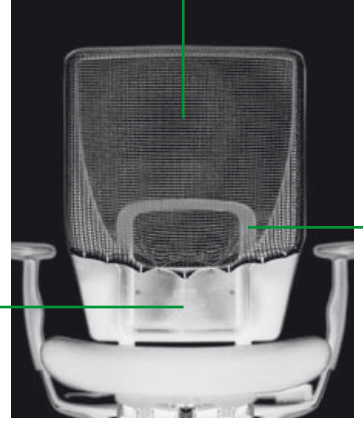
Antonio Citterio, architect and designer, was born in 1950 and now lives and works in Milan. Citterio started working with Vitra in 1988. Since then, he has designed a number of office and visitor chairs, armchairs, and the office furniture programmes Ad Hoc, Spatio, and Ad One. The Citterio Collection is continually expanding.

Vitra has been exploring sitting and working for more than 40 years. Long years of experience are incorporated into the development of all products.



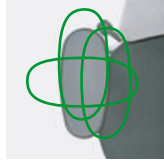
The **ergonomic backrest** of Oson CE allows the shoulders to sink lightly into the backrest, causing the spine to spontaneously rise and straighten. In the reclined position, the viewing angle of the user adapts to the position of the monitor, so that it is possible to continue working in a relaxed position.

The construction is rigid in the **lumbar zone**, providing optimal back support.



Oson CE

The **3D armrests** of Oson C and Oson CE can be adjusted for height, width and depth and can swivel 360 degrees.



The **back brace** optimises support in the lumbar zone.

The height of the **backrest** is variable.

The **seat** is adjustable in height and depth.



The backrest can be locked into any position with the **Stop-and-Go mechanism**.

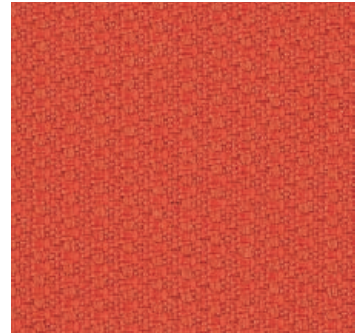
The **automatic synchronised mechanism**, combined with the synchronised forward tilt, encourages dynamic seating habits and offers a smooth range of movement.

Oson C

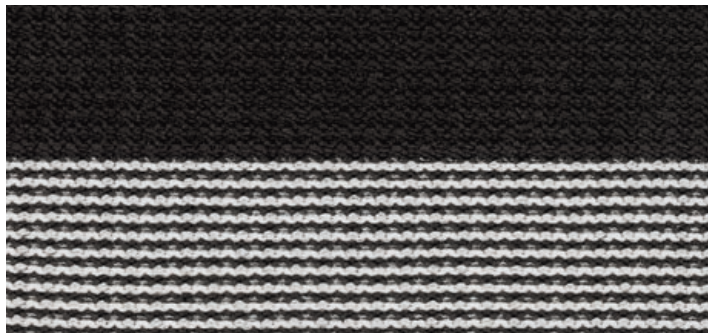
Oson automatically adapts to the weight of the user. An additional fine-tuning adjustment is provided.



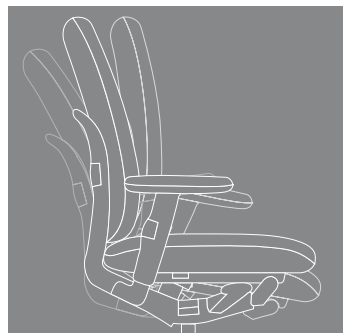
The shell-shaped seat provides comfort and ergonomic support without pressure points.



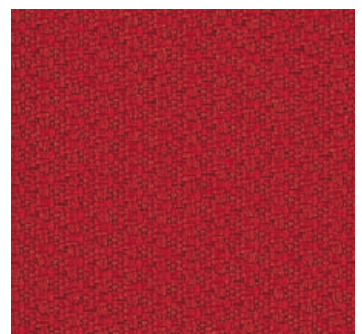
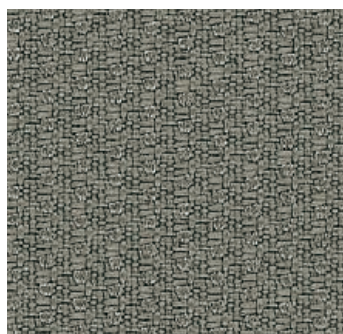
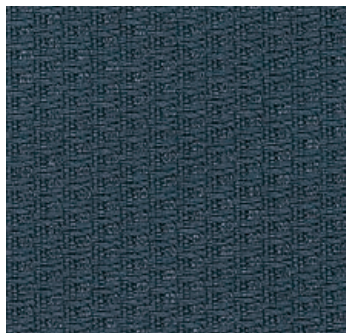
In addition to automatic weight adaptation, Oson offers a variety of individual adjustment options. The controls are logical, simple to use and easy to locate. They also have a pleasant surface texture.



New technology combines the forward tilt of the seat with the synchronised mechanism: the backrest follows the forward tilt of the seat in a synchronised movement.



With the two chair versions and a wide variety of materials and colours, Oson is the right choice for an ergonomic office chair in any work setting.



Oson is an office chair for spontaneous and individual use. Without complicated adjustments all Oson models offer a high level of comfort and the newest technology for ergonomically correct, healthy seating. Due to its automatic weight adjustment, Oson encourages dynamic seating habits while supporting the user's body in every position – from the reclined working position to the front edge of the chair for deskwork.

Oson C is well-suited to companies with diverse workplaces requiring a chair that quickly adapts to different users.

Oson CE is an attractive new model in this series with a high, flexible backrest.



The **synchronised forward tilt** causes the seat surface to tip slightly forward along with the user's weight to facilitate deskwork. This causes the spine to spontaneously rise and straighten. The backrest follows this movement, providing uninterrupted back support. As a result, dynamic seating habits are encouraged with continuous support in every sitting position.

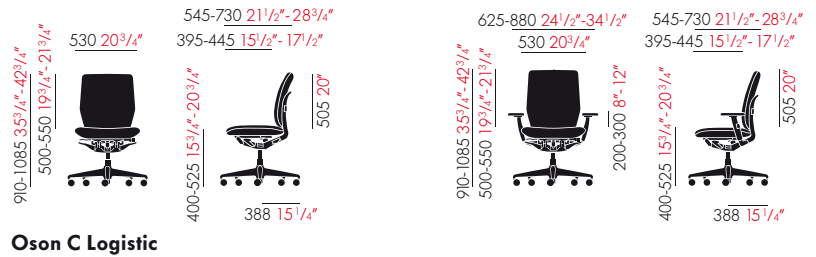
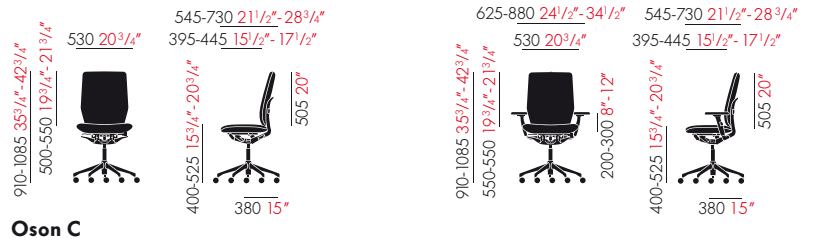


Oson Programme features

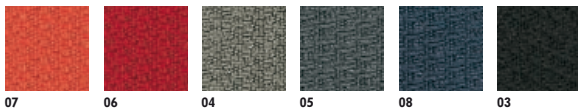
Office swivel chair conforming to EN 1335 and ANSI/BIFMA. Automatic synchronised mechanism with fine-tuning adjustment. Chair can be locked into different positions (Stop-and-Go mechanism). Forward tilt. Height-adjustable backrest (range 5 cm) for adaptation of lumbar support. Seat depth adjustment (range 5 cm). Seat and back material polyurethane foam cushion. Armrest support and backrest brace made of polyamide in the colours warm grey or basic dark. Armrest pad made of polyurethane foam in basic dark. Base in three versions: polished pressure-cast aluminium, solid plastic (basic dark) flat (logistics version) or ascending. Knitted upholstery fabric, Clima-Seat available at additional cost. Oson bears the ergonomic seal of approval from the LGA Nuremberg.

Oson C: cover fabric Ora (Trevira CS) or knitted. With or without armrests which are adjustable in height and angle. **Oson CE:** cover fabric Ora (Trevira CS) or knitted. **Backrest:** polyamide frame, upholstered over stretched netweave cover. With or without armrests which are adjustable in height and angle. Armrest pad available in two sizes.

All measurements in millimetres and inches, established pursuant to EN-1335,1



Ora



Deviations in colour are possible due to the printing process.

Knitted fabric Oson*



*backrest only

23

Also available in fabric quality **Polo** by Kvadrat.
Sample card available upon request.

Citerio Collection



BIFMA

vitra.

Vitra International AG, Birsfelden, CH | Vitra Ges.m.b.H., Wien, A | NV Vitra Belgium SA, Diegem, B | Vitra AG, Birsfelden, Showroom: Zürich, CH | Vitra koncept, s.r.o., Praha, CZ | Vitra GmbH, Weil am Rhein, Showroom: Frankfurt, D | Vitra Hispania S.A., Madrid, Showroom: Barcelona, E, Lisboa, P | Vitra S.a.r.l., Paris, F | Vitra Ltd., London, GB | Vitra International AG, Budapest, HU | Vitra India Pvt Ltd., Mumbai, Showrooms: New Delhi, Bangalore, Hyderabad, IN | Vitra Internacional, S. de R.L. de C.V., Mexico DF, MX | Vitra (Nederland) B.V., Ouderkerk aan de Amstel, NL | Vitra Scandinavia AS, Oslo, N | Vitra International AG, Warszawa, PL | Vitra Furniture (Shanghai) Co., Ltd., Shanghai, PRC | Vitra International AG, Moscow, RU | Vitra Furniture Pte. Ltd., Singapore | Vitra Inc., New York, Culver City, San Francisco, Chicago, USA | info@vitra.com, www.vitra.com