

# Citizen

Konstantin Grcic, 2020



## Citizen Highback, Citizen Lowback

The Citizen armchair combines an unconventional design with a new way of sitting: the seat is suspended on three cables to enable a pleasant swinging movement, while the backrest is firmly attached to the steel frame. This unique dynamic sitting experience is enhanced by the sink-in effect of the cantilever frame, which is mounted on a swivel base.

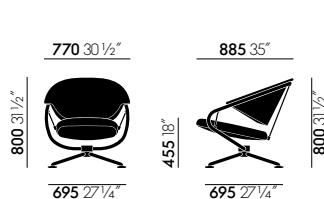
Citizen is characterised by its tubular steel frame, which defines the structure and shape of the chair, as well as by the freely suspended seat cushion that appears to float above the base. The seat and backrest are upholstered; no structural elements are hidden and the metal frame is deliberately left visible. This gives Citizen an honest and unpretentious look with a sporty flair.

Citizen is available in two versions: Citizen Highback has the typical commanding presence of a lounge chair and offers extraordinary comfort with its high backrest, while Citizen Lowback with a low backrest can be arranged in groups for seating in public lounges and lobbies. The upholstery covers can be selected from a range of materials. An identical cover is used for the seat and back, while the neck pillow may be chosen in a different material.

### Materials

- **Frame:** tubular steel, powder-coated in deep black (textured finish).
- **Back:** support shell in rigid polyurethane foam, encased in moulded polyurethane foam.
- **Neck cushion (Citizen Highback):** filled with a mix of 50% polyester fibre and 50% ball fibre.
- **Seat:** metal inserts, encased in moulded polyurethane foam. Suspended on frame by means of three steel cables, cathodic dip coating in black.
- **Cover:** fabric or leather.
- **Seat height:** 455 mm (320 mm with applied load, measured in accordance with EN 1335-1:2000).
- **Base:** four-star swivel base made of tubular steel, powder-coated in deep black (textured finish), plastic glides with felt inserts.

## DIMENSIONS (in accordance with EN 1335-1:2000)



Citizen Lowback



Citizen Highback

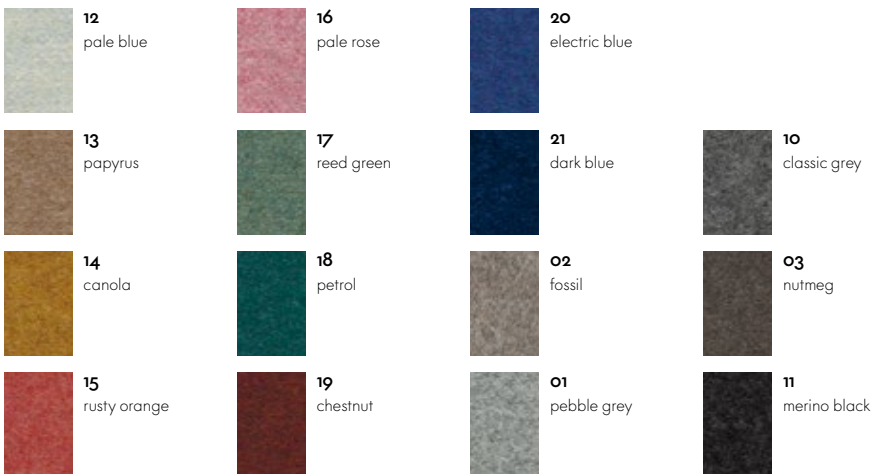
# Cosy 2 Heavy use, F80



Cosy 2 is a high-quality milled woollen cloth with a warm character. The lively melange yarn emphasises the fabric's natural colours – from delicate shades to vibrant hues – and gains added elegance with colour-coordinated stitching. The fabric offers thermal comfort and excellent durability, making it suited for upholstered furniture in office settings as well as residential applications.

Material	20% polyamide, 80% new wool
Weight	590 g/m <sup>2</sup> (17.4 oz/y <sup>2</sup> )
Width	154 cm +/- 2 cm (60")
Abrasion resistance	50,000 Martindale
Fastness to light	Type 6
Pilling	Grade 4-5
Fastness to rubbing	Grade 4-5 dry and wet

Cosy 2 is available in 15 colours.



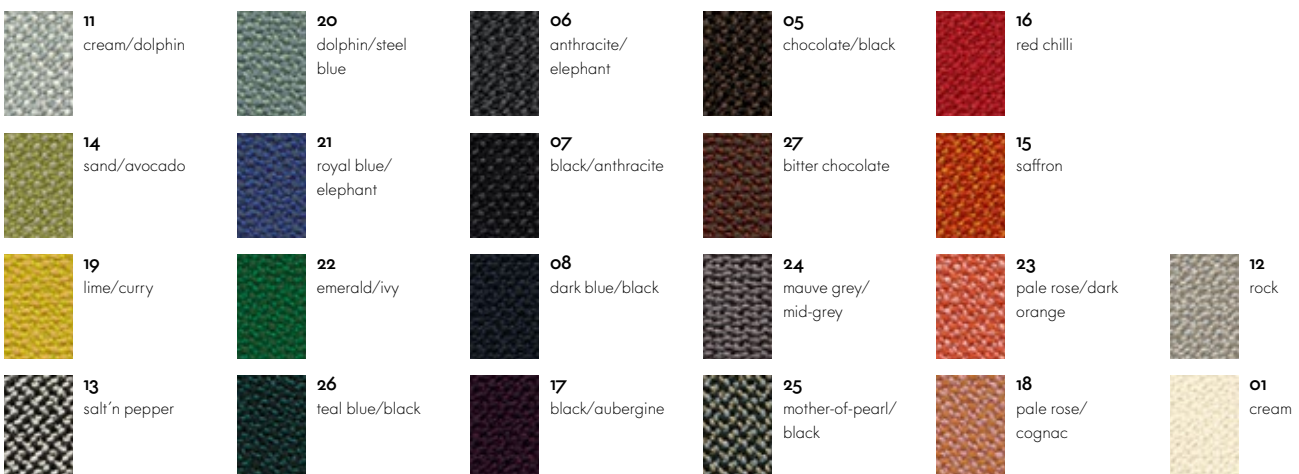
# Credo Heavy use, F120



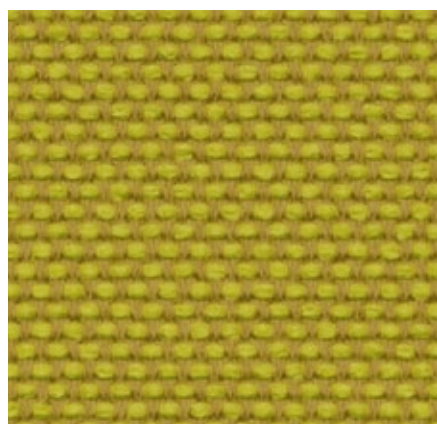
Credo is a durable woollen fabric made of premium worsted yarn with a pleasant feel. The two- and three-tone colours give this fabric a characteristic structure and vibrant appearance. Credo allows for an effective exchange of heat to ensure comfortable thermal conditions for the sitter. The fabric can also be used in office environments.

Material	5% polyamide, 95% new wool
Weight	640 g/m <sup>2</sup> (18.9 oz/y <sup>2</sup> )
Width	145 cm +/- 2 cm (57")
Abrasion resistance	100,000 Martindale
Fastness to light	Type 6
Pilling	Grade 4-5
Fastness to rubbing	Grade 4-5 dry and wet

Credo is available in 22 colours.



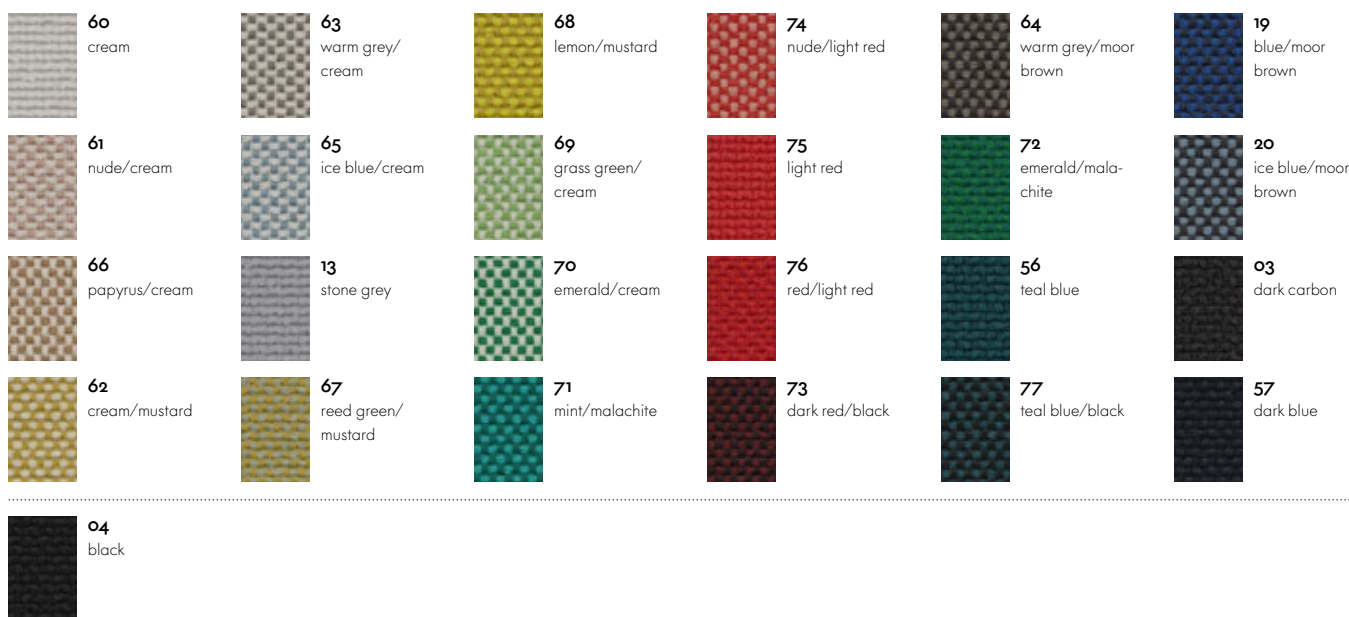
# Laser RE Heavy use, F40



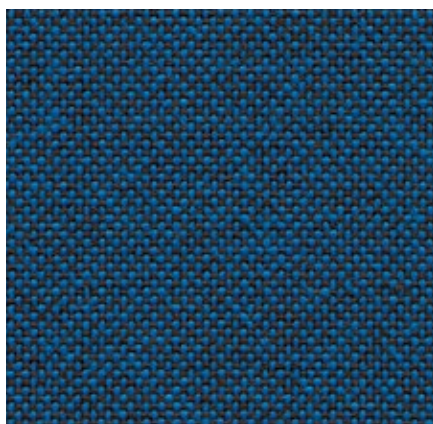
The environmentally friendly fabric Laser RE is made from recycled polyester. It has a distinctive woven appearance, which is particularly accentuated by contrasting duotones in a varied palette of 25 colours. Practical and easy to care for, as well as durable and highly abrasion-resistant, Laser RE is also well suited for office environments.

Laser RE is available in 25 colours.

Material	100% recycled polyester
Weight	520 g/m <sup>2</sup>
Width	144 cm +/- 2 cm
Abrasion resistance	100,000 Martindale
Fastness to light	Type 6
Pilling	Grade 4-5
Fastness to rubbing	Grade 4-5 dry and wet



# Plano Heavy use, F30



Plano is a robust plain weave with a flat, even texture. The wide palette of duotones with new, delicate washed-out shades includes many relatively neutral hues, a good number of which are coordinated with the Hopsak colour range. Thanks to its durability and longevity, Plano is also an ideal choice for office furnishings.

Plano is available in 39 colours.

Material	100% polyester
Weight	265 g/m <sup>2</sup> (7.8 oz/y <sup>2</sup> )
Width	142 cm +/- 2 cm (56")
Abrasion resistance	80,000 Martindale
Fastness to light	Type 6
Pilling	Grade 4-5
Fastness to rubbing	Grade 4-5 dry and wet

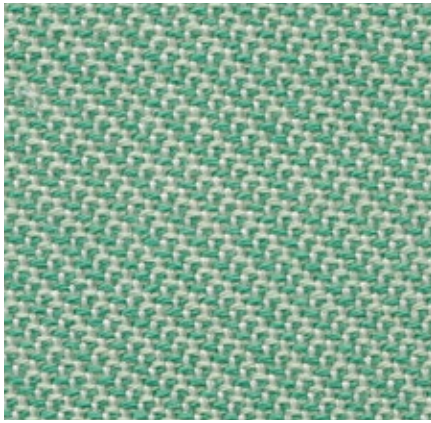
 <b>05</b> cream white/ sierra grey	 <b>34</b> grass green/ forest	 <b>12</b> light grey/ice blue	 <b>81</b> blue/coconut	 <b>19</b> sierra grey	 <b>73</b> nero/coconut
 <b>18</b> light grey/sierra grey	 <b>61</b> classic green/ cognac	 <b>17</b> forest/sierra grey	 <b>86</b> dark blue/brown	 <b>74</b> sierra grey/nero	 <b>66</b> nero
 <b>39</b> yellow/pastel green	 <b>41</b> classic green/ forest	 <b>40</b> coconut/forest	 <b>13</b> nero/ice blue	 <b>69</b> dark grey	 <b>54</b> brown
 <b>68</b> avocado	 <b>52</b> mint/forest	 <b>43</b> petrol/nero	 <b>87</b> nero/cream white	 <b>62</b> dark grey/nero	 <b>75</b> marron/nero

---

 <b>67</b> cognac	 <b>72</b> poppy red	 <b>84</b> poppy red/ champagne	
 <b>11</b> marron/cognac	 <b>07</b> orange	 <b>15</b> pink/sierra grey	 <b>99</b> cognac/parchment
 <b>98</b> dark red/nero	 <b>96</b> red/cognac	 <b>16</b> dark red/ice blue	 <b>20</b> tobacco/cream white
 <b>97</b> red/coconut	 <b>63</b> red/poppy red	 <b>80</b> coffee	 <b>03</b> parchment/ cream white

# Track Heavy use, F120

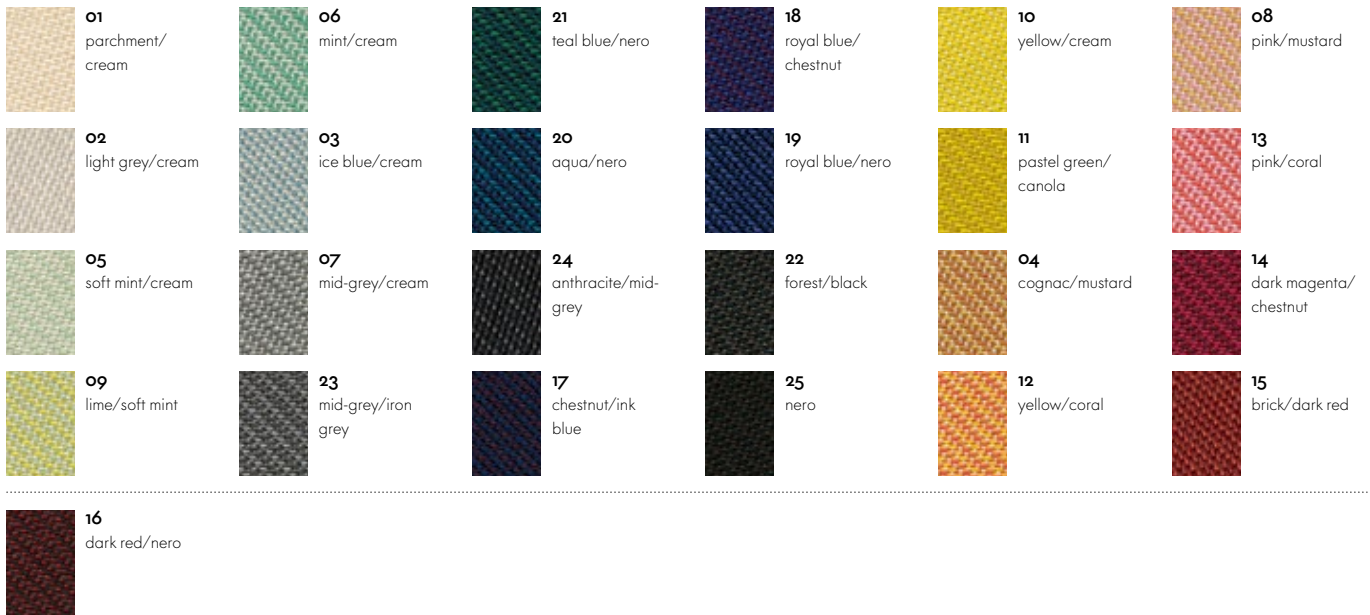
**vitra.**



Track is a medium-weight woollen fabric with a subtle pattern of fine diagonal stripes, which gives it a sporty, fresh appearance. Thanks to its high quality, the fabric is suited for office environments, but also adds a beautiful touch to home interiors.

Track is available in 25 colours.

Material	10% polyamide, 90% new wool
Weight	480 g/m <sup>2</sup> (14.2 oz/y <sup>2</sup> )
Width	143 cm +/- 2 cm (56")
Abrasion resistance	100,000 Martindale
Fastness to light	Type 6
Pilling	Grade 4-5
Fastness to rubbing	Grade 4-5 dry and wet



# Leather Heavy use, L20

**vitra.**



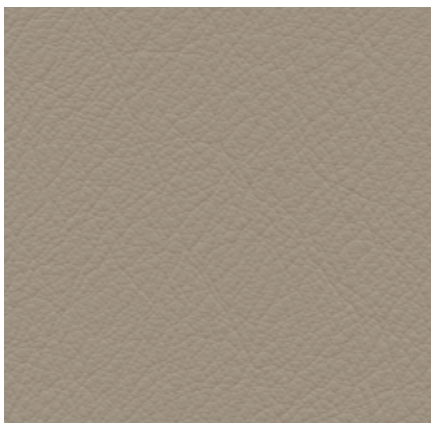
The standard grade leather used by Vitra is a robust cowhide leather, dyed-through, pigmented and embossed with an even grain pattern. Since it is hard-wearing and easy to maintain, it can also be used in office environments.

Leather is available in 16 colours.

Material	Robust cowhide with a distinctive, even grain
Fastness to light	Type 6
Thickness	1.1–1.3 mm
Fastness to rubbing	Grade 4 dry and wet



# Leather Premium F Medium Use, L50



Leather Premium F is a relatively smooth cowhide leather with a flat grain and fine top sheen. It is dyed-through, lightly pigmented and processed with a tanning agent extracted from olive tree leaves (a waste product of the olive harvest).

Leather Premium F is available in 22 colours.

Material	Semi-aniline nappa leather with a very soft and supple feel, vegetable tanned
Fastness to light	Type 5
Thickness	1.1–1.3 mm
Fastness to rubbing	Grade 4 dry and wet

